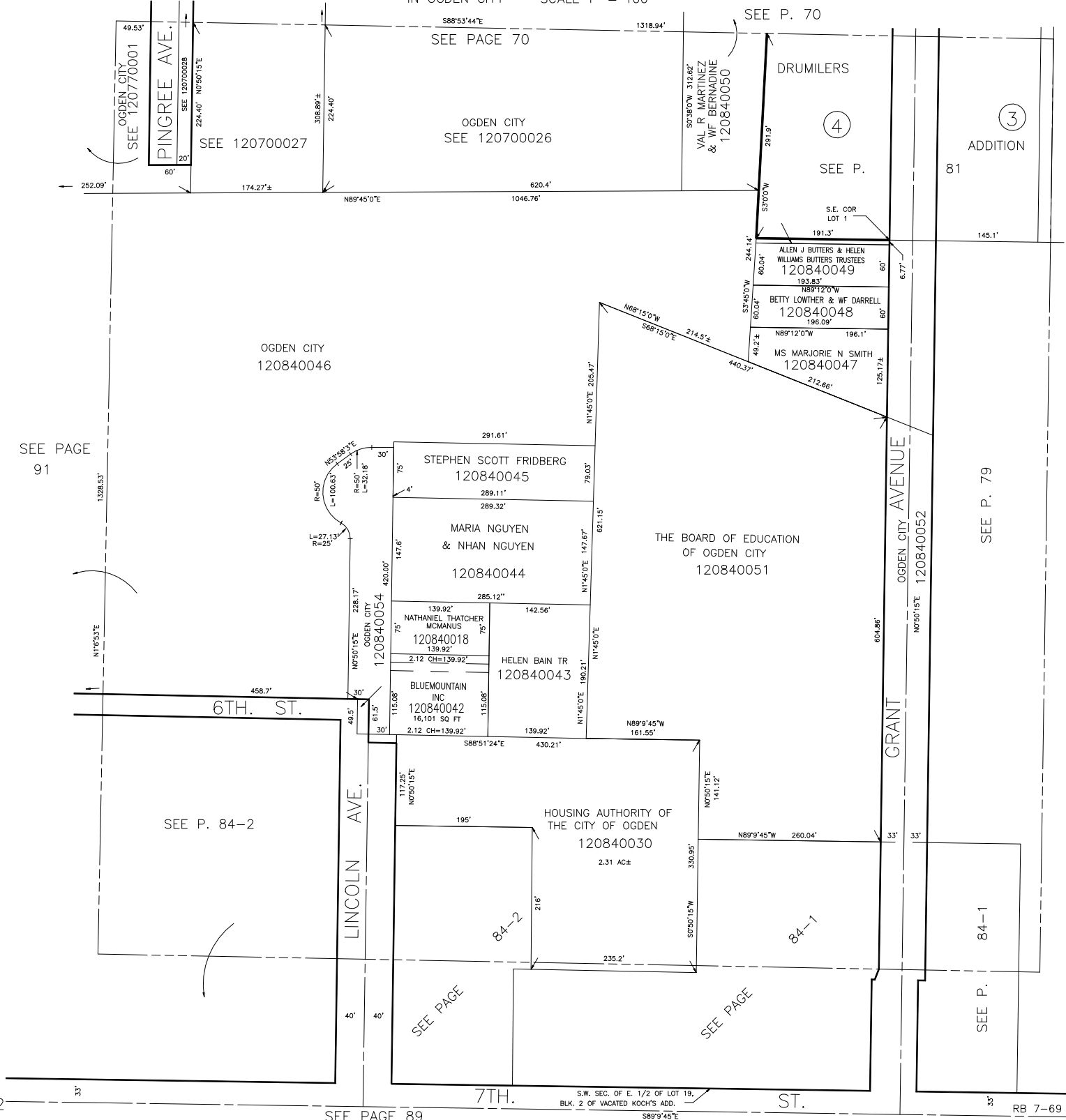


N.W. 1/4 OF S.E. 1/4 OF SECTION 17, T.6N.,R.1W., S.L.B.&M.

IN OGDEN CITY SCALE 1" = 100'

TAXING UNIT: 25

SEE P. 70



SEE PAGE 91

SEE P. 84-2

SEE PAGE

SEE PAGE

SEE P.

84-1

84-2

84-1

ADDITION 81

4

3

SEE P.

SEE P. 79

THE BOARD OF EDUCATION OF OGDEN CITY 120840051

DRUMILERS

VAL R MARTINEZ & WF BERNADINE 120840050

S.E. COR LOT 1

ALLEN J BUTTERS & HELEN WILLIAMS BUTTERS TRUSTEES 120840049

BETTY LOWTHER & WF DARRELL 120840048

MS MARJORIE N SMITH 120840047

STEPHEN SCOTT FRIDBERG 120840045

MARIA NGUYEN & NHAN NGUYEN 120840044

NATHANIEL THATCHER MCMANUS 120840018

HELEN BAIN TR 120840043

BLUEMOUNTAIN INC 120840042

HOUSING AUTHORITY OF THE CITY OF OGDEN 120840030

S.W. SEC. OF E. 1/2 OF LOT 19, BLK. 2 OF VACATED KOCH'S ADD.

SEE PAGE 89

RB 7-69

12

33'

40'

40'

33'

33'

S89°45'E